





# CONTENTS

## SUMMIT 38

17 SUMMIT 38  
A REALM OF EXPLORATION

20 DESIGN  
STORY

21 ELEVATED SPACE  
EVEREST  
MONT BLANC  
K2

24 SWAN LIBRARY

26 FLOOR PLAN

27 THE ART OF HOSPITALITY

29 ELEVATED DINING —  
AKIRA BACK  
PERIDOT  
HANA NO KUMO

36 GET IN TOUCH

## CLOUD 39

3 THE HENDERSON  
AN ICON AMONGST ICONS

5 CLOUD 39  
THE PINNACLE OF  
EVENT EXPERIENCES

7 DESIGN  
STORY

8 MAJESTIC SPACE  
FOYER  
BALLROOM  
THE BAR  
THE TERRACE  
VIP LOUNGE  
POWDER ROOMS

13 FLOOR PLAN

14 ENCHANTING GATHERINGS  
WEDDINGS  
CORPORATE  
SOCIAL

# AN *Icon* AMONGST *Icons*

Designed by the renowned Zaha Hadid Architects, The Henderson is a striking new landmark in the heart of Central – Hong Kong’s epicentre of finance, culture and cuisine. Inspired by a blossoming Bauhinia bud, its sculptural form rises above landmarks, such as Hong Kong Park and Chater Garden, offering sweeping views of the skyline and harbour beyond.

More than an architectural marvel, The Henderson redefines the city’s event landscape with spaces for milestone occasions and elevated gatherings. Cloud 39 unveils the city’s highest all-glass rooftop ballroom, a VIP Lounge, and a sweeping terrace. Just below, Summit 38 introduces immersive dining and versatile venues, together creating the ultimate stage for weddings and glittering soirées.





# AT THE CENTRE *of* IT ALL

The Henderson is conveniently located in Central on Hong Kong Island, ensuring an effortless arrival for you and your guests.

-  DIRECT ELEVATOR ACCESS FROM THE GROUND-FLOOR LOBBY TO CLOUD 39 & SUMMIT 38
-  265 PARKING SPACES WITH ELECTRIC VEHICLE CHARGING STATIONS
-  78 DEDICATED MOTORCYCLE PARKING SPACES
-  VIP DROP-OFF ZONE & PRIVATE ELEVATOR FOR A GRAND ARRIVAL
-  SEAMLESS ACCESS TO MTR HUNG HOM (PIER 8) & AIRPORT EXPRESS STATIONS



THE PINNACLE *of*  
EVENT EXPERIENCES

CLOUD 39

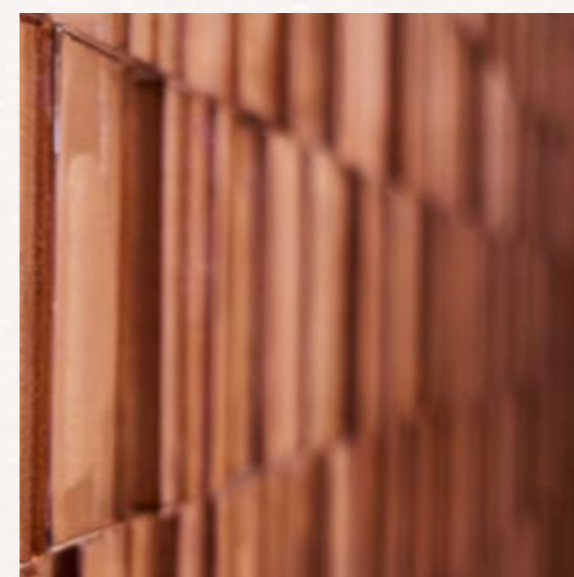
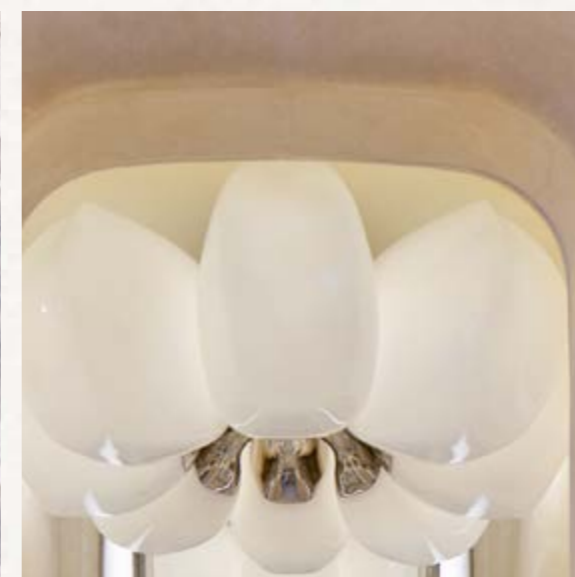
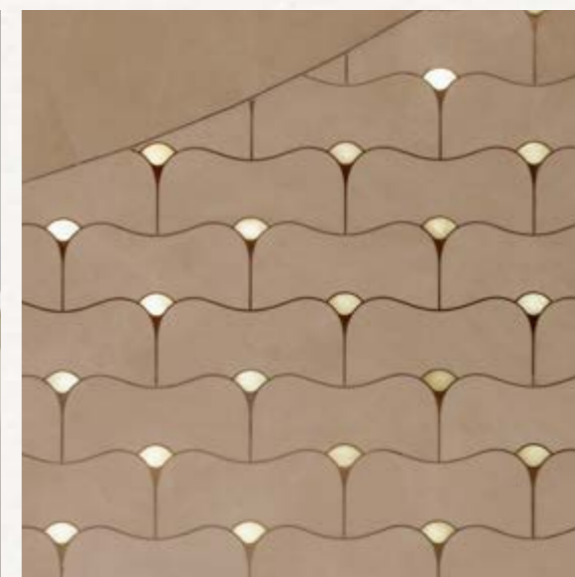


## EVENTS THAT GO *above & beyond*

Soaring above Central, Cloud 39 is the region's premier destination for unforgettable weddings, corporate events and milestone moments. From its all-glass rooftop ballroom – the city's highest – to a wraparound terrace with panoramic 270-degree views and a serene VIP Suite,

this ethereal venue immerses guests in a world of natural beauty, futuristic luxury and endless possibilities. Crowning The Henderson, Cloud 39 brings together exceptional architecture, hospitality and gastronomy, ensuring every occasion feels truly on top of the world.

# A SYMPHONY *of* LIGHT, COLOUR, TEXTURE



Cloud 39 redefines the private event experience through a visionary design by Studio Paolo Ferrari, the award-winning Toronto-based practice known for its expressive, sensorial spaces. Drawing inspiration from the fluid silhouette of The Henderson and the organic geometries found in nature, the design articulates a bold new language of luxury – one that is sculptural, serene and undeniably futuristic.

Across a seamless progression of spaces, guests encounter softly curved forms, tactile textures and luminous materials that elevate every gathering to an extraordinary occasion. From handcrafted metal details to plush custom furnishings and natural stone surfaces, each element is composed with meticulous care, creating a harmonious balance of contrast and calm.

# MAJESTIC SPACE

Cloud 39 unfolds as a collection of radiant, light-filled spaces – each designed to elevate life’s most memorable moments with grace, artistry and architectural vision.



## *Foyer*

Step into the Foyer, where a gently arched ceiling studded with over 2,000 seeded glass luminaires sets an elegant tone. Gleaming marble and backlit onyx flooring add texture and depth, while a sinuous bar invites guests to gather for handcrafted drinks.

Connected to the main ballroom and terrace, the foyer provides a refined space for receptions, refreshment breaks or VIP welcomes. What’s more, the fluid layout ensures a graceful transition from arrival to celebration.



# Ballroom

Suspended in the clouds, Cloud 39 is home to Hong Kong's highest rooftop ballroom. An extraordinary setting, this pillar-less, glass-encased space features soaring ceilings and panoramic views of Victoria Harbour, the skyline and the surrounding mountains.

Custom acoustic felt tapestries lend softness and visual depth, while retractable sunshades allow natural light to be fine-tuned. A built-in LED wall and portable display complete the space, seamlessly marrying refined elegance with next-generation technology.





## *The Bar*

Anchoring the foyer, the sculpted sandstone bar provides a refined, welcoming setting for pre-reception cocktails, refreshment breaks, or celebratory toasts.

Cloud 39's in-house mixology team, whose artistry consistently elevates every occasion, crafts everything from bespoke signature cocktails to timeless classics with creativity and precision.

## *The Terrace*

Seamlessly connected to the foyer and ballroom, the open-air terrace offers 270-degree views of Hong Kong's iconic skyline, from the harbour to forested peaks and gleaming towers. With its

dramatic vantage point and seamless indoor-outdoor flow, the terrace becomes an ideal, unforgettable setting for golden-hour ceremonies and starlit evening receptions.





## *VIP Lounge*

Serene and secluded, the VIP Lounge, which also serves as the bridal suite, offers a private retreat for you and your most important guests to relax, refresh and prepare before your event. Framed by mesmerising skyline views,

the suite features an elegant dressing alcove with petal-shaped mirrored panels, and a bespoke salon chair for pre-event pampering or private touch-ups. Thoughtfully designed lighting and plush seating create timeless sophistication.



## *Powder Rooms*

Radiant and refined, the powder rooms at Cloud 39 are more than a necessity, they're a destination in their own right. The women's space glows with floor-to-ceiling pink onyx, softly arched ceilings, and vanities sculpted from the same exquisite stone. At the far end, a private makeup area offers an intimate retreat, adorned with shell-like

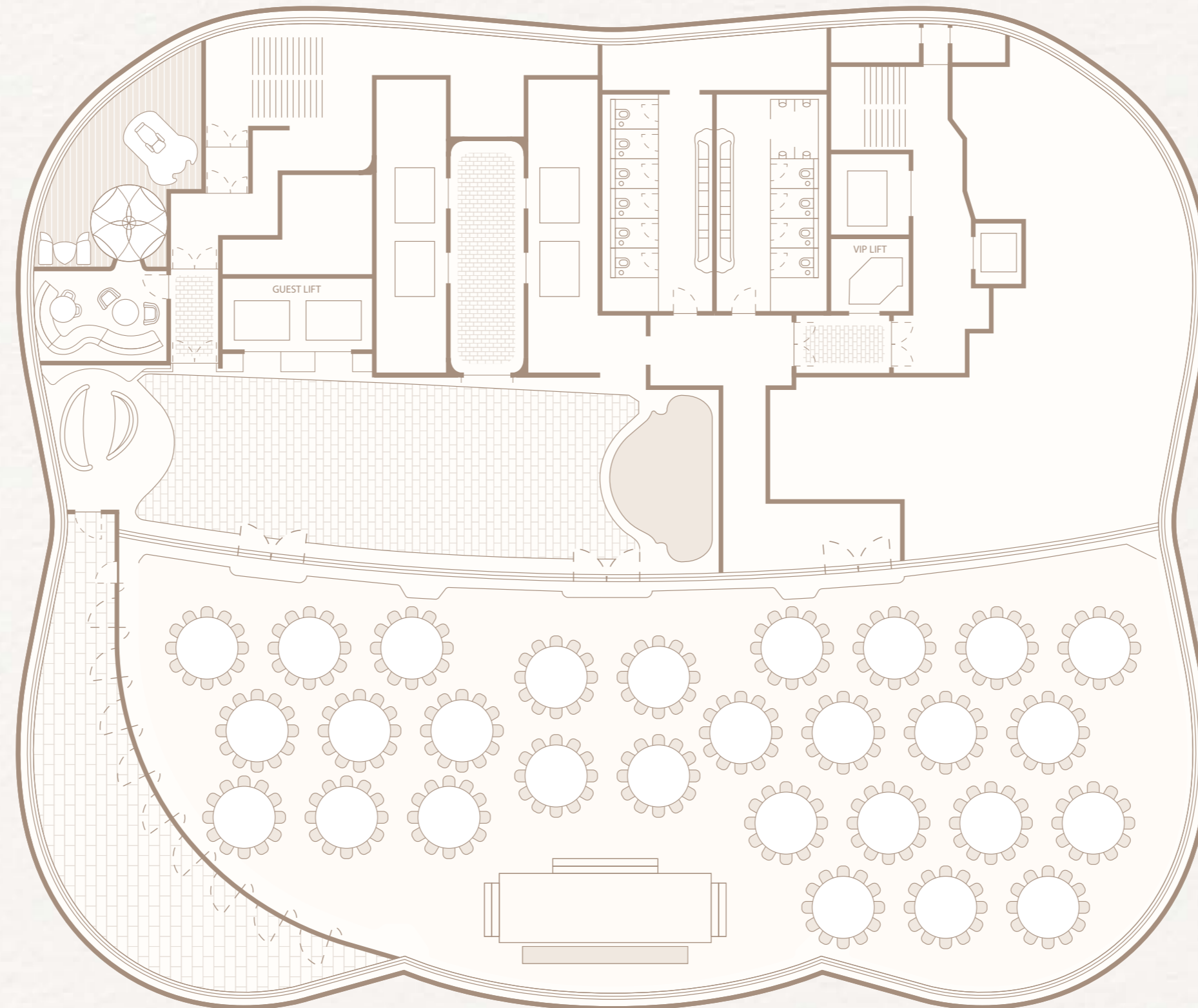
sconces and silk-embroidered wall coverings – a graceful homage to Chinese artistic heritage.

In contrast, the men's room captivates with richly veined lime-green marble, evoking a sense of organic luxury and wonder. Every detail invites guests to linger, making these powder rooms an unforgettable part of the Cloud 39 unique experience.



CEILING HEIGHT

*Up to 8 Metres*



TOTAL AREA

EVENT CAPACITY

BALLROOM

FOYER

TERRACE

BANQUET

COCKTAIL

CLASSROOM

THEATRE

*approx. 6,800 sq. ft*

*approx. 2,000 sq. ft*

*approx. 980 sq. ft*

*336 guests*

*450 guests*

*220 guests*

*400 guests*

# *Enchanting* GATHERINGS

Imagine a place where light, art and atmosphere move in effortless harmony. Where a suite of versatile venues feels equally suited to glamorous weddings and intimate meetings. Where intuitive service, seamless technology and personalised design bring your vision to life, allowing you to stay present and focus on the people, moments and memories that matter most.



# WEDDINGS

Every detail of your event should feel both luxurious and deeply personal, from the tableware and linens to the cocktails and desserts. Dedicated to realising your vision, our team works closely with you to create an atmosphere that reflects your unique style.

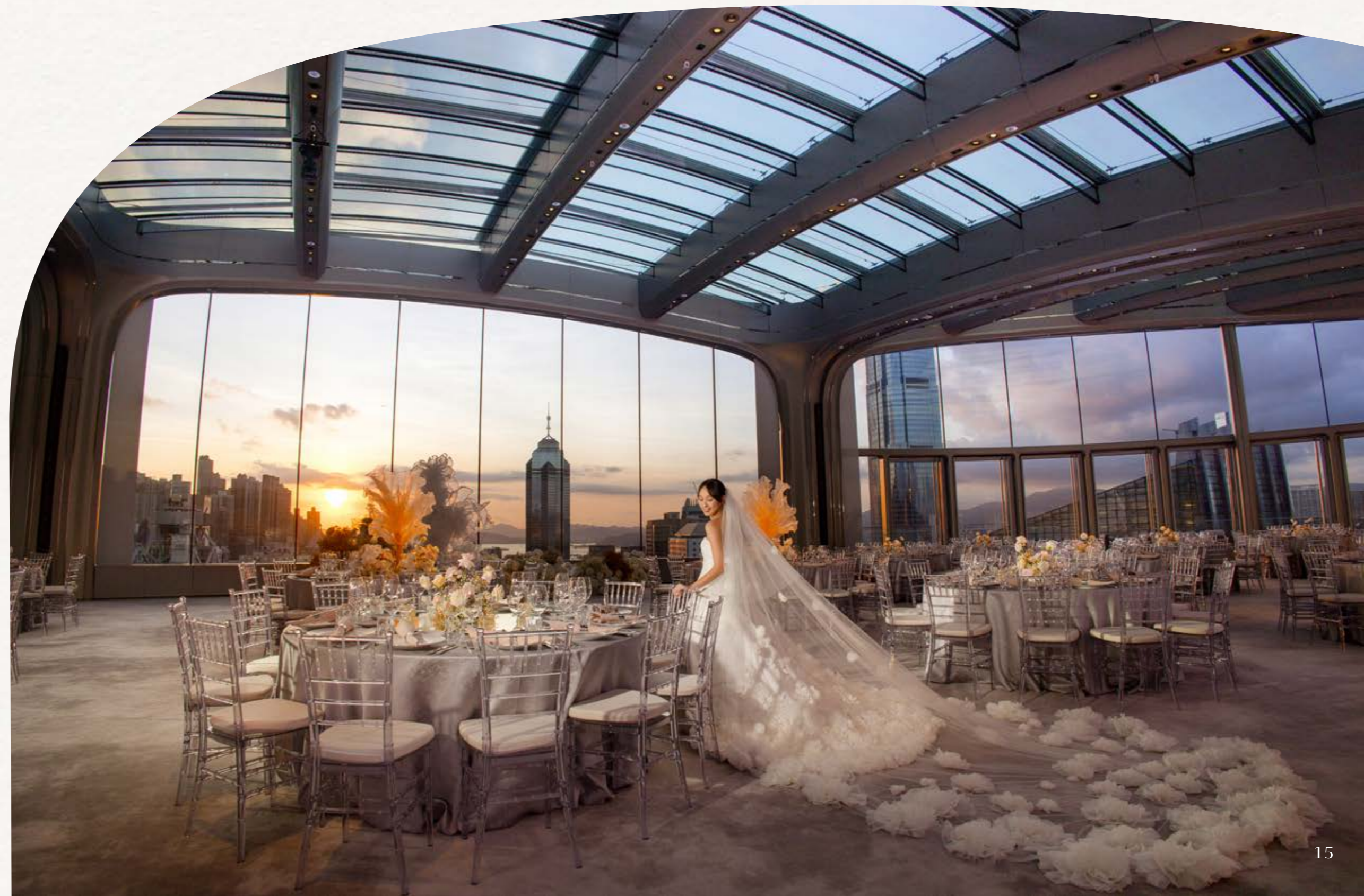


# CORPORATE

Experience a peerless setting for conferences, launches and private meetings. Bathed in natural light and supported by intuitive technology, our thoughtfully designed spaces invite focus, creativity and connection, allowing ideas to take shape among the clouds.

# SOCIAL

At Cloud 39, celebrations rise above the ordinary. From milestone birthdays to elegant dinners, panoramic views and attentive hospitality create an atmosphere that feels both intimate and extraordinary – a sky-high stage for moments meant to be remembered long after the evening ends.



# BLUEPRINTS *for* BRILLIANCE

Whether you're planning a grand celebration or discreet gathering, event begins with a vision. To help bring yours to life, we've curated five distinct styling themes – *Elegance, Opulence, The Aristocrat, Avant-Garde and Chinoiserie* – each with its own refined visual language. Find out more with our Event Specialists.





S U M M I T 3 8

# Elevated Events *Beyond* Compare

Step into Summit 38 and leave the rush of the city behind. Set on the 38th floor of The Henderson, this distinctive hospitality destination channels the spirit of discovery and the tranquility of mountain peaks.

At its heart are three versatile venues – Everest, Mont Blanc, and K2 – each named after iconic summits and designed to host a range of events, from intimate dinners to corporate milestones.

Just beyond, Swan Library offers a serene space for event planning, where guests can collaborate with specialists to shape every detail, from floral styling to bespoke wedding cakes.

Completing the ascent are two distinctive restaurants and bars – Hana no Kumo, an intimate kappou experience that celebrates the precision and beauty of Japanese seasonality, and Peridot, a vibrant vegan bar – both led by two visionary protagonists.

Whether you're gathering for a personal celebration or corporate event, Summit 38 invites you to experience hospitality at its highest expression.





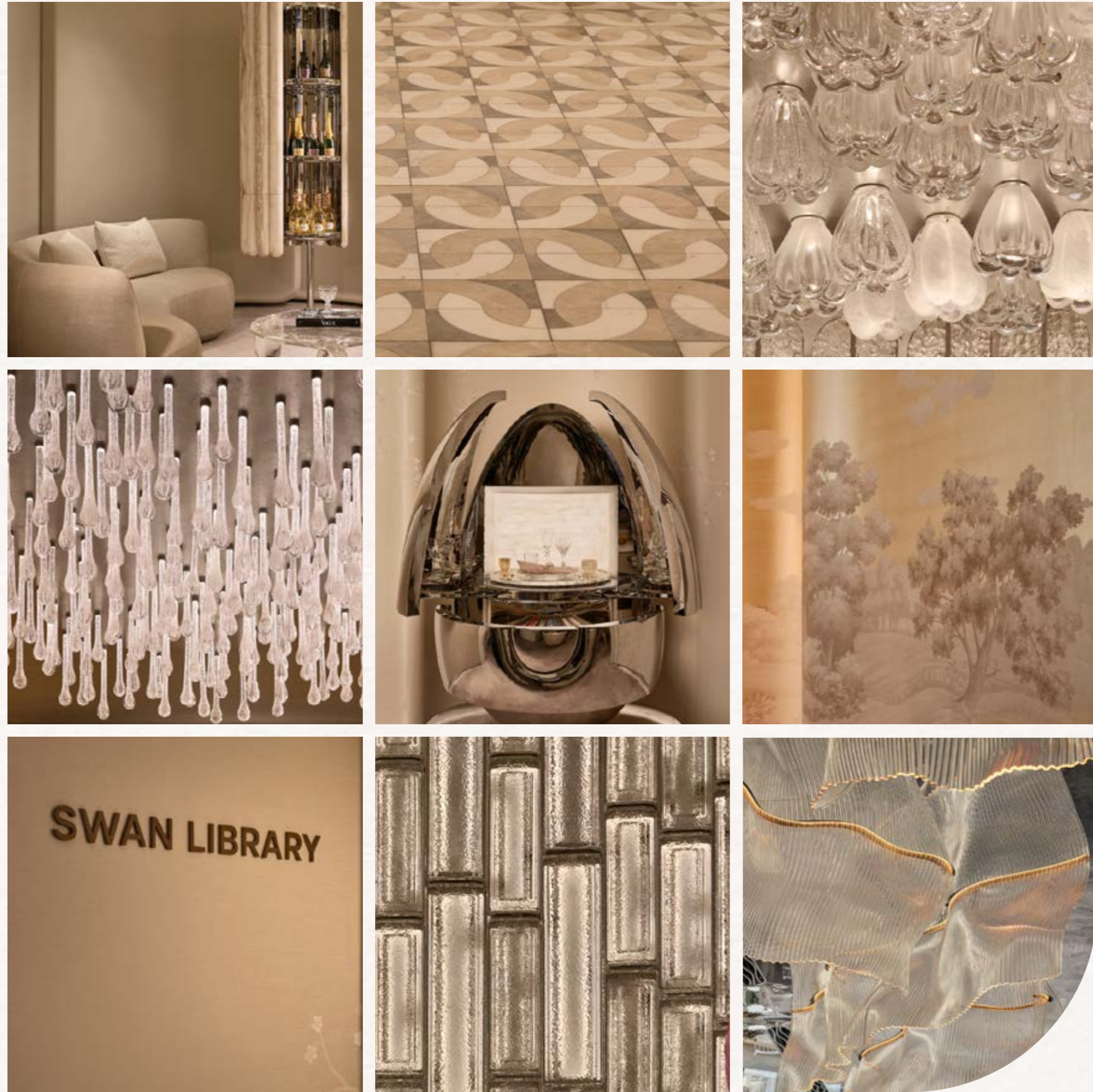
## A Design Journey *Above* the City

Designed by Studio HBA, Summit 38 evokes tranquil alpine landscapes, from still mountain peaks to the gentle glow of dawn. A sequence of interconnected spaces unfolds through a luminous entryway of white onyx, silver leaf and stone mosaics, leading to three versatile venues – Everest, Mont Blanc, and K2 – as well as the Swan Library, a show suite for personalised decor.

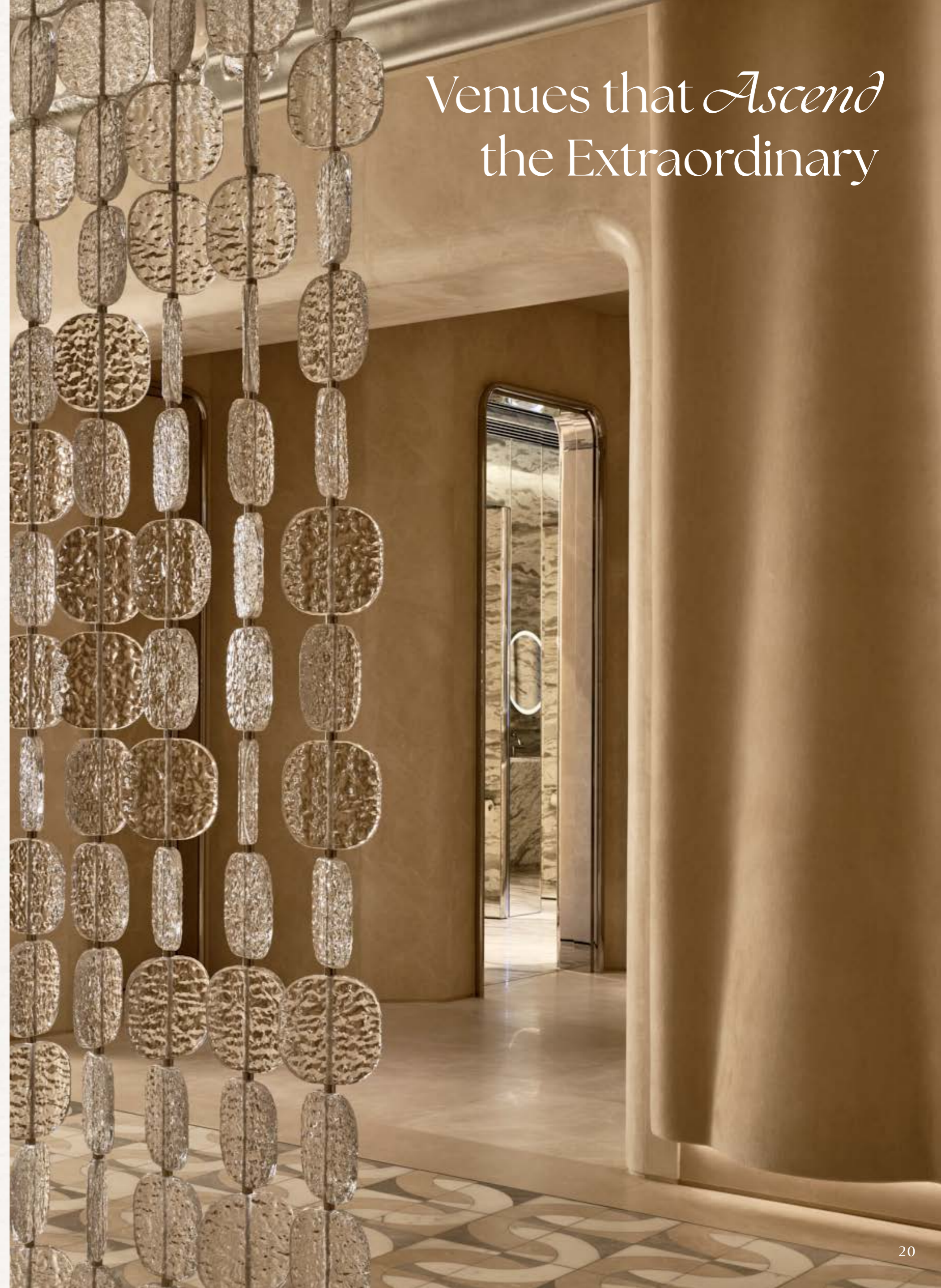
Also by Studio HBA, Hana no Kumo is an intimate kappou restaurant inspired by the ephemeral beauty of cherry

blossoms. Curved timber walls, live-edge marble, and soft lighting create a warm, immersive setting for hyper-seasonal Japanese cuisine crafted with precision.

Offering a striking contrast, Peridot—designed by Studio Paolo Ferrari—infuses the experience with bold personality. Plush velvet seating, a monochromatic green palette, and an illuminated perforated ceiling create a vivacious atmosphere where experimental design and flavours come together.



## Venues that *Ascend* the Extraordinary



With striking design, gourmet dining and adaptable venues, Summit 38 offers an ascendant hospitality experience in the heart of Central. The experience begins in the enchanting arrival lobby, where silver leaf details and stone finishes set a sophisticated tone. Just beyond, the foyer enhances the sense of arrival with a luminous screen of suspended glass droplets and white onyx portal.

The luxurious journey continues across three distinctive venues: Everest, Mont Blanc and K2. Named after the world's legendary summits, each space feels at once timeless and forward-thinking, creating a truly elevated experience for you and your guests.

# *Everest & Mont Blanc*



Overlooking the city, Everest spans 1,900 square feet of refined, flexible space. A sculptural ceiling installation formed from bespoke crystal pendants echoes the contours of mountain ridges, while silver-leaf finishes and custom wall coverings lend a calm, contemporary feel. With panoramic skyline views and a versatile layout, it's well-suited for everything from executive meetings to weddings and brand launches.

## *Everest & Mont Blanc*

Seamlessly connected to Everest, Mont Blanc shares the same ethereal design while offering a more intimate setting for up to four tables. Ideal for elegant dinners, tea ceremonies or board meetings, this adaptable 1,200-square-foot space allows for a private, personalised experience without compromising atmosphere or style. For added flexibility, Everest and Mont Blanc can be combined to accommodate larger celebrations and conferences across 3,100 square feet.



*K2*



Tucked away like a hidden gem, K2 offers an exquisite setting for intimate gatherings, such as tea ceremonies and mahjong evenings or discreet meetings and meals. Spanning 460 square feet, the space exudes a refined residential charm, featuring hand-painted landscape wall coverings, soft silver-leaf accents and a sculptural glass pendant that casts a gentle glow overhead.







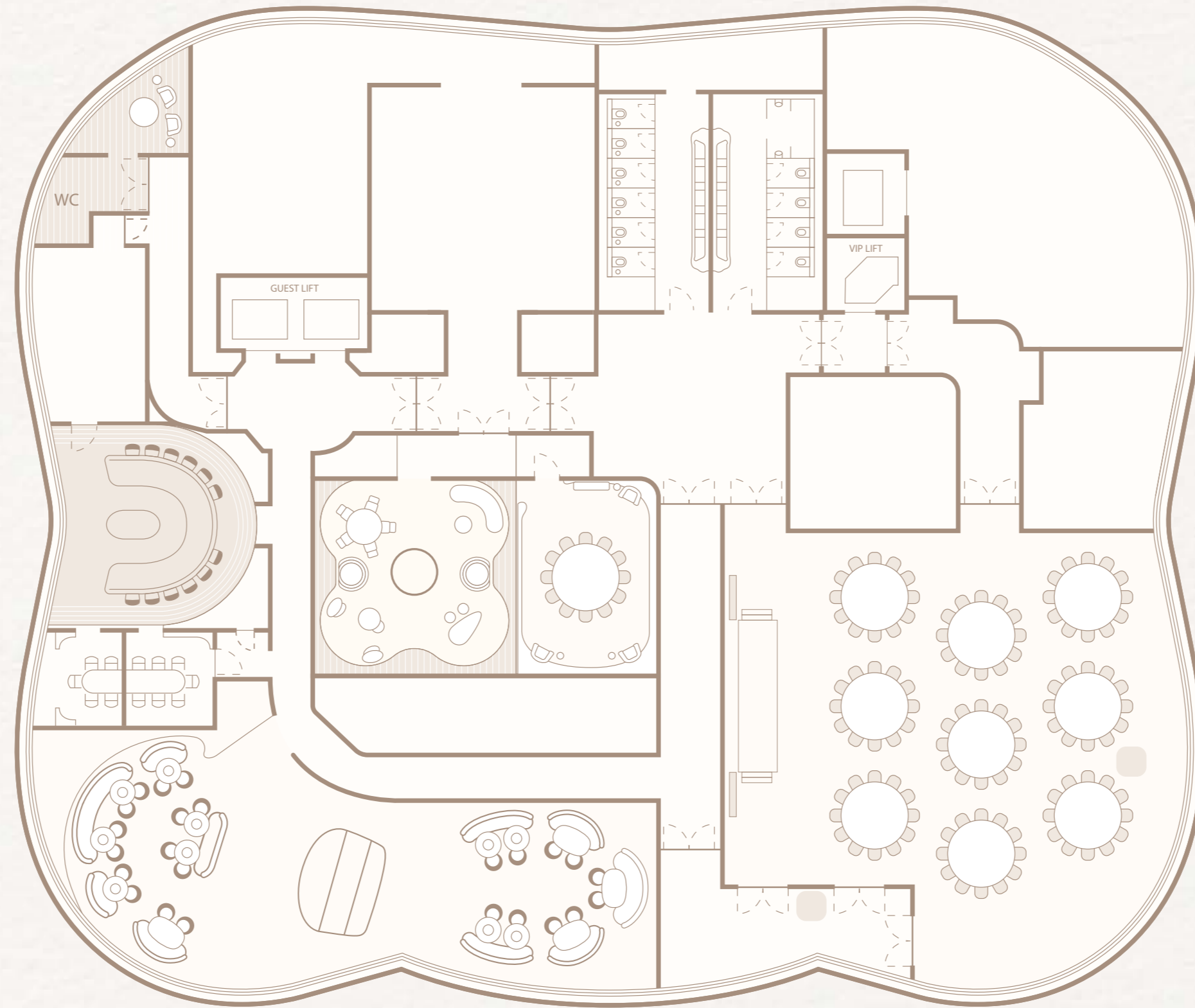
## *Swan Library*

Awash in soft champagne tones and mirrored chrome accents, Swan Library serves as a luxurious styling studio where you can curate every detail of your event, from porcelain plates and linens to glassware and floral arrangements.

Purpose-built displays combine beauty with ingenuity: a leather cabinet opens to reveal a rainbow of premium napkins, a sculptural stone ovoid presents floral centrepiece inspiration, and a glass cloche showcases stunning desserts. In this carefully considered space, we invite you to linger, explore, and envision your gathering brought to life.

GRAND VENUE

*Up to 3,560 sq. ft*



TOTAL AREA

EVENT CAPACITY

|                     |                     |                   |                   |                   |                  |                   |
|---------------------|---------------------|-------------------|-------------------|-------------------|------------------|-------------------|
| EVEREST             | MONT BLANC          | K2                | BANQUET           | COCKTAIL          | CLASSROOM        | THEATRE           |
| <i>1,900 sq. ft</i> | <i>1,200 sq. ft</i> | <i>460 sq. ft</i> | <i>108 guests</i> | <i>160 guests</i> | <i>80 guests</i> | <i>160 guests</i> |

# Discover the *Art of Hospitality*

Exceptional event planning underpins every memorable gathering. At Cloud 39 and Summit 38, each occasion is led by dedicated Event Specialists with expertise in luxury weddings, high profile corporate gatherings and bespoke celebrations.

Working seamlessly with in-house culinary, design and technical teams, they oversee every detail with precision and discretion, allowing hosts and guests alike to focus fully on the moment.



## A Culinary Journey, *Tailored to Your Tastes*

Exceptional cuisine is the soul of a memorable event – setting the tone, sparking conversation, and leaving a lasting impression. With global experience in Michelin-starred restaurants and leading luxury hotels, our culinary team delivers exceptional, tailor-made menus for every occasion.

From elevated Cantonese banquets to contemporary Western dishes, each creation is crafted with care and seasonal flair. This culinary experience balances tradition and innovation, and is paired with bespoke cocktails and curated wine selections, elevating every celebration to new heights.



## A Seamless Fusion of Style and Technology

Our world-class venues blend architectural elegance with seamless technology to create immersive guest experiences. At Cloud 39, a 12.8 m x 4 m built-in LED wall enables cinematic visuals, complemented by a portable screen for clear sightlines.

Across Cloud 39 and Summit 38, integrated audio, customisable lighting, and high-speed wireless internet support everything from intimate ceremonies to livestreaming events and hybrid meetings – all managed by our experienced in-house technical team.

## Celebrating *with* a Lighter Footprint

As part of The Henderson, which is pre-certified for LEED and WELL Platinum, and on track to attain top-tier ratings under China's Healthy and Green Building standards, Cloud 39 and Summit 38 are raising the bar for responsible luxury in Hong Kong.

Both venues have been thoughtfully designed to elevate the guest experience while reducing environmental impact. You and your guests will enjoy superior air

quality, optimal thermal comfort and abundant natural light, with 70% of upper-level spaces offering daylight access modulated by intelligent shading systems.

Sustainably sourced and recyclable materials are used throughout, from finishes to furnishings, creating a celebration space that's as conscientious as it is beautiful. Even arrival is future-ready, with a fully EV-equipped car park supporting greener transport options for your event.



## Global, *Elevated* Gastronomy

Summit 38 is also home to two exceptional culinary destinations, each offering its own immersive experience. Whether you're planning a refined dinner, handcrafted cocktails or private celebrations, these venues – Hana no Kumo and Peridot – can be reserved for exclusive gatherings.

Akira Back, on the 5th level, also welcomes intimate events, with a bold Japanese–Korean flavours with a global influence and a fluid space that accommodates up to 72 guests, including an art-filled private dining room.

Together, these three venues offer bespoke settings for elevated, one-of-a-kind occasions.





# Akira Back



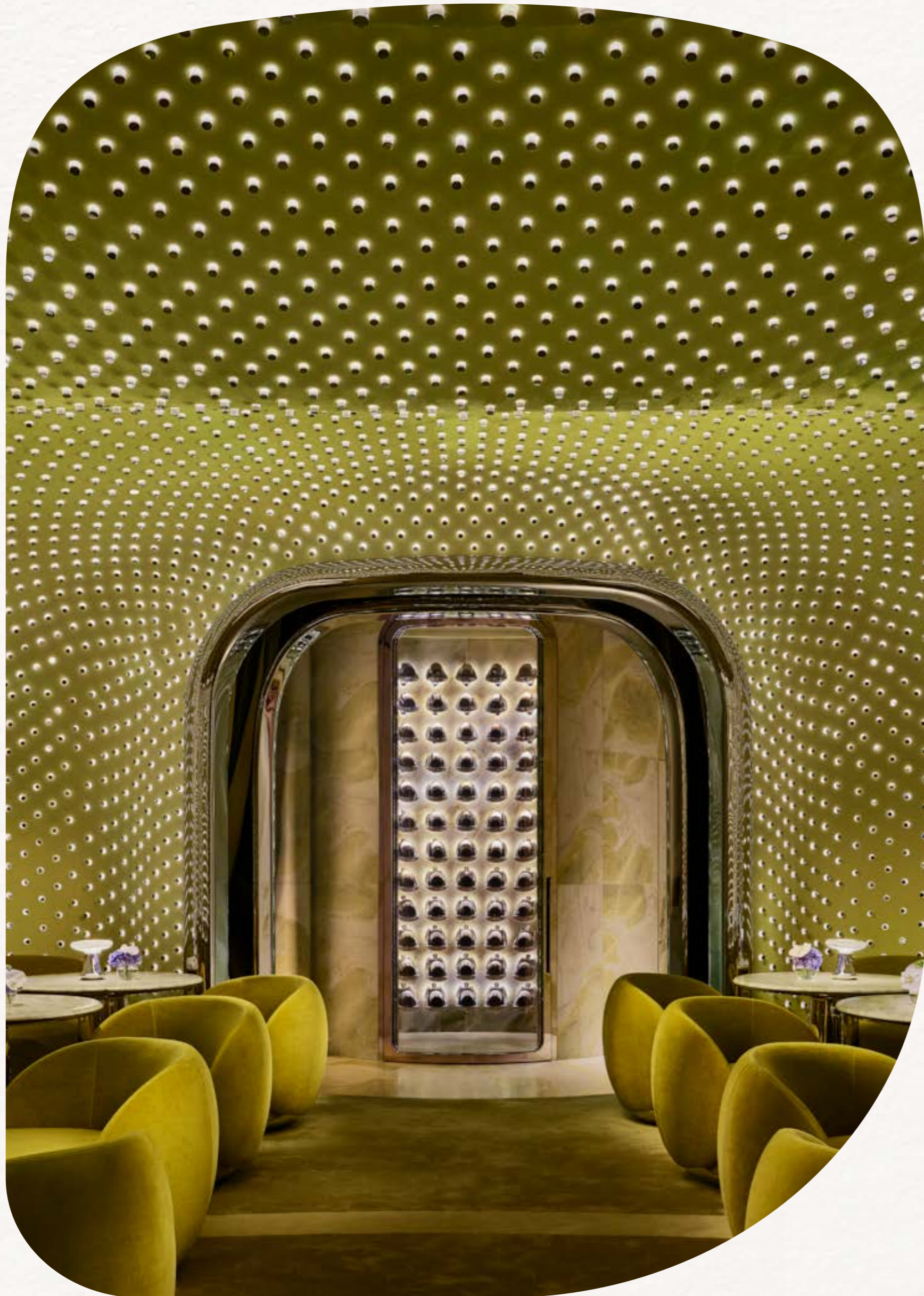
A bold expression of Japanese–Korean cuisine with global flair, Akira Back brings the acclaimed chef’s playful style to The Henderson in a setting defined by drama, precision and modern glamour. Designed by award-winning studio AB Concept, the restaurant is an elevated destination for celebratory dinners, corporate entertaining and stylish social gatherings.

Guided by a “Culinary Symphony” concept, the interiors harmonise rhythm and flow through curving lines, eye-catching lighting and refined materials, such as dark timber, textured stone and luminous metallic accents that echo the skyline beyond.

Inspired by Chef Akira Back’s personal journey from Seoul to Aspen, the menu reflects the restaurant’s expressive design, blending bold flavours with tradition and innovation. Complementing the main dining room, a striking private dining room features sculptural “marshmallow” ceiling and wall art inspired by paintings by Akira Back’s mother, creating an immersive and memorable setting for any occasion.







## Peridot

Named after a gemstone symbolising health and prosperity, Peridot is a sky-high destination for terroir-inspired cocktails and plant-based haute cuisine. With a futuristic lime-hued palette and sweeping city views, it offers a one-of-a-kind setting for cocktail receptions, awards ceremonies and networking events.

The interior features glowing glass accents, sculptured marble surfaces, and a signature light green palette that radiates with vibrancy. The space resembles a deconstructed disco ball with over 20,000 handcrafted lights, creating a unique visual effect. The backlit metallic elements and polished steel furnishings reflect light in mesmerising ways, adding to the surreal quality of the space. Every detail – from the centrepiece bar to the textured seating – evokes vitality and connection, creating an atmosphere that evolves effortlessly from day to night.



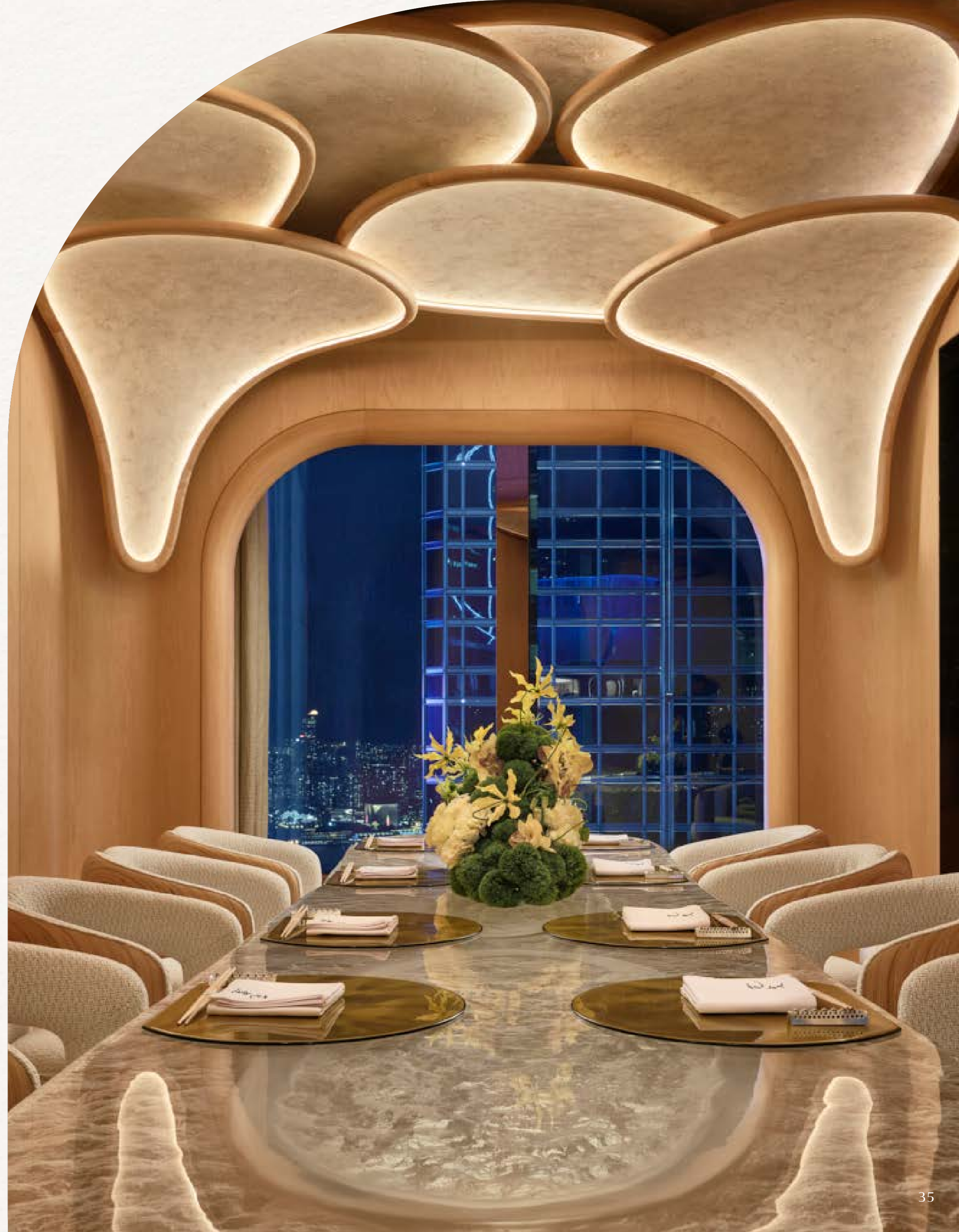
HANA  
NO  
KUMO

花  
雲

A refined setting for immersive kappou dining, Hana no Kumo – meaning “cloud of blossoms” – evokes a poetic sense of beauty, seasonality and grace. This intimate venue is ideal for hosting special occasions.

At its heart is a circular chef’s counter, where guests are treated to a masterfully choreographed meal that celebrates the precision of seasonal Japanese cuisine. The interiors reflect the restaurant’s namesake with warm wood finishes, soft upholstery, and a sculptural ceiling evoking a cherry blossom.

For an even more exclusive experience, a private dining room accommodating ten guests offers a cocooned setting anchored by curved timber walls and a glowing resin table set beneath a petal-shaped canopy. A stunning sake cellar completes the restaurant, featuring capsule-like alcoves showcasing premium bottles – perfect for toasting a memorable evening.



# Get in Touch

If you'd like to schedule a tour or discuss your upcoming occasion, our team would be delighted to assist. Please reach out with the contact details:

## Cloud 39 & Summit 38 Events

Phone Number  
+852 9733 8788

Email  
events.thehenderson@hld.com

Website  
cloud39.com  
summit38.com

Social Media  
@cloud39hk  
@summit38hk

## Hana no Kumo

Phone Number  
+852 9722 8688

Email  
info@hananokumohk.com

Website  
hananokumohk.com

Social Media  
@hananokumohk

## Peridot

Phone Number  
+852 9722 8388

Email  
info@peridothk.com

Website  
peridothk.com

Social Media  
@peridothk

## Akira Back

Phone Number  
+852 9733 8988

Email  
info@akirabackhk.com

Website  
akirabackhk.com

Social Media  
@akirabackhk